

BV702

Dual Arm Filtration Unit

BenchVent
The Bench Ventilation Company

Dual Arm Filtration System.

Compact yet powerful this low noise unit is suitable for use either for a single operator or for two. It is a high volume system designed to remove and filter fume and particles before returning cleaned air back into the workplace.

Applications include filtration of:

Conformal coating, monomer adhesives, lacquers and fixatives as well as fine dusts and solder smoke and fumes from manual soldering. For use in production, R & D and rework departments.



Demonstrating adequate control of the risks to the health of employees, students and the general public, from dusts, powders, mists, fumes and vapours is the fundamental requirement of the Control of Substances Hazardous to Health (COSHH) regulations 2002 and 2004.

www.benchvent.com

BenchVent Filtration Cabinets

NOTE: These units are recirculatory; i.e. filtered air is exhausted back into the workplace.

For a cleaner, healthier working environment.

Description

Stainless Steel construction – fan/filter unit mounted into base unit - particulate pre filter – 99.997% HEPA - activated carbon filter– fan motor , continuous run external rotor motor type brushless, UL, VDE and CSA approved - sealed electrical wiring and switch, downstream of filters - Automatic electronic flow control to maintain constant extraction rate - Adjustable airflow - Filter Blocked warning.

Operation

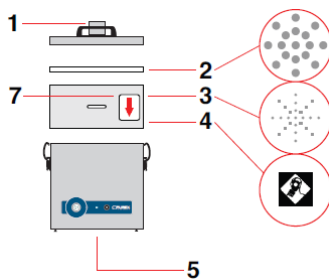
All BenchVent filtration and extraction systems carry a return to base warranty, are quiet in operation and can be assembled in seconds. Place under a desk, connect hoses, position extract arm over extract point and then simply plug in and switch on.

Units are supplied with

1 x filter + pre filter pad, 2x 51mm x 2m flexible hose, 4 x Connecting cuffs (black), 2 x clamped bracket

2 x 38mm stainless steel arm and valve, 2 x 38mm pen nib nozzle and conical cowls

Other attachment are available. See accessories sheets for full details



Legend:

- 1) Air inlet - 57mm ID - 62mm OD
- 2) Pre-filter.
- 3) Main Filter (HEPA location).
- 4) Main Filter (Carbon location).
- 5) Clean air returned to workplace.
- 7) Filter identification label.

In cleanroom filters, positions 3&4 are reversed.

Filtration

Combination of filters can be utilised. Pre filter for larger particles and HEPA filtration to 99.997% MPPS typically Granulated active carbon filtration up to clean room standards available.

Through the process of filtration, adsorption and dilution, operator exposure to concentrations of potentially hazardous substances is vastly reduced.

Specification

| Model Number | Fan Motor* Spec | Width mm | Height mm | Depth mm | Weight kgs |
|--------------|-----------------|----------|-----------|----------|------------|
| BV702 | 230V 50Hz 140W | 308 | 366 | 294 | 17 |

*110v 50 or 60Hz available on request

These units are designed predominantly for production / workshop cleanliness and for immediate operator protection from concentrations of airborne contaminants.

Please contact BenchVent for advice on the choice of machine for any given situation.

T: 01423 790039

E: enquiries@benchvent.com

W: www.benchvent.com

BenchVent, Unit 1 Levens Hall Park, Lund Lane, Killinghall, Harrogate, North Yorkshire, HG3 2BG

Company No: 03217859 Registered office: Widespread Solutions Ltd, Unit 1 Levens Hall Park, Lund Lane, Killinghall, Harrogate, North Yorkshire, HG3 2BG

BenchVent is a trading style of Widespread Solutions Ltd

We go to great lengths to ensure accuracy in our literature, however we cannot be held responsible for errors or omissions. Information is given for guidance only and we reserve the right to alter specification.