

# BV308

## Single Arm Filtration Unit



### Single Arm Filtration System.

The FumeCube is designed to protect personnel from inhaling hazardous dust and fumes which are generated during a wide range of applications. The FumeCube allows the user to quickly attach a 38mm stainless steel arm with a pen nib nozzle to the workbench by using a versatile clamp bracket. If the work area moves, the FumeCube can be relocated in seconds!

### Applications include filtration of:

Conformal coating, monomer adhesives, lacquers and fixatives as well as fine dusts and solder smoke and fumes from manual soldering. For use in production, R &D and rework departments.

---

### Controls

**Visual and Audible Filter Blocked Warning.** Alerts the operator when a filter starts to block so that a replacement filter can be acquired and downtime can be avoided.

### LED Filter Status

Green = Filter OK, Yellow = Filter nearly full, Red = Filter full, replacement required



Demonstrating adequate control of the risks to the health of employees, students and the general public, from dusts, powders, mists, fumes and vapours is the fundamental requirement of the Control of Substances Hazardous to Health (COSHH) regulations 2002 and 2004.

[www.benchvent.com](http://www.benchvent.com)

# BenchVent Filtration Cabinets

NOTE: These units are recirculatory; i.e. filtered air is exhausted back into the workplace.

For a cleaner, healthier working environment.

## Description

Stainless Steel construction – fan/filter unit mounted into base unit - particulate pre filter – 99.997% HEPA - activated carbon filter– fan motor , continuous run external rotor motor type brushless, UL, VDE and CSA approved - sealed electrical wiring and switch, downstream of filters - Automatic electronic flow control to maintain constant extraction rate - Adjustable airflow - Filter Blocked warning.

## Operation

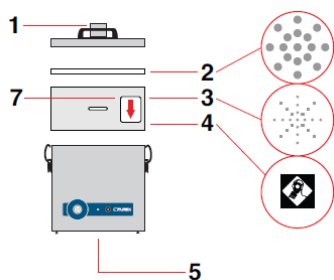
All BenchVent filtration and extraction systems carry a return to base warranty, are quiet in operation and can be assembled in seconds. Place under a desk, connect hoses, position extract arm over extract point and then simply plug in and switch on.

Units are supplied with:

1 x filter + pre filter pad, 1x 51mm x 2m flexible hose, 2 x Connecting cuffs (black), 1 x clamped bracket

1 x 38mm stainless steel arm and valve, 1 x 38mm pen nib nozzle

Other attachment are available. See accessories sheets for full details



### Legend:

- 1) Air inlet - 57mm ID - 62mm OD
- 2) Pre-filter.
- 3) Main Filter (HEPA location).
- 4) Main Filter (Carbon location).
- 5) Clean air returned to workplace.
- 7) Filter identification label.

In cleanroom filters, positions 3&4 are reversed.

## Filtration

Combination of filters can be utilised. Pre filter for larger particles and HEPA filtration to 99.997% MPPS typically

Granulated active carbon filtration up to clean room standards available.

Through the process of filtration, adsorption and dilution, operator exposure to concentrations of potentially hazardous substances is vastly reduced.

## Specification

Model Number	Fan Motor* Spec	Width mm	Height mm	Depth mm	Weight kgs
BV308	230V 50Hz 140W	308	366	294	17

\*110v 50 or 60Hz available on request

These units are designed predominantly for production / workshop cleanliness and for immediate operator protection from concentrations of airborne contaminants.

Please contact BenchVent for advice on the choice of machine for any given situation.

T: 01423 790039

E: [enquiries@benchvent.com](mailto:enquiries@benchvent.com)

W: [www.benchvent.com](http://www.benchvent.com)

BenchVent, Unit 1 Levens Hall Park, Lund Lane, Killinghall, Harrogate, North Yorkshire, HG3 2BG

Company No: 03217859 Registered office: Widespread Solutions Ltd, Unit 1 Levens Hall Park, Lund Lane, Killinghall, Harrogate, North Yorkshire, HG3 2BG

BenchVent is a trading style of Widespread Solutions Ltd

We go to great lengths to ensure accuracy in our literature, however we cannot be held responsible for errors or omissions. Information is given for guidance only and we reserve the right to alter specification.