

# Heavy Duty Downdraught Bench With Knee-space

## BV-FPK



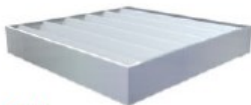
### Controls

On/off switch or optional speed control wired to standard 13a plug for rapid installation.



### Filter monitoring

By differential pressure gauge



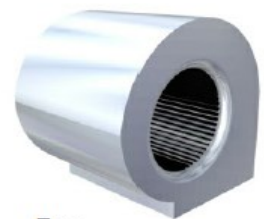
### Filters

Selected to suit the application from the full AirBench range.



### Body

2mm steel plate, fully welded and powder coated.



### Fan

High powered centrifugal fan  
\* 2 fans in larger units.



### Filter removal

Quickly and simply by removing the top surface.  
Filters are spring-clamped against soft rubber seals.



### Surface

Heavy duty 3mm perforated steel plate with 4mm dia perforations, powder coated.  
\* In multiple sections on 975 deep units.

T:

01423 790039

E: [enquiries@benchvent.com](mailto:enquiries@benchvent.com)

W: [www.benchvent.com](http://www.benchvent.com)

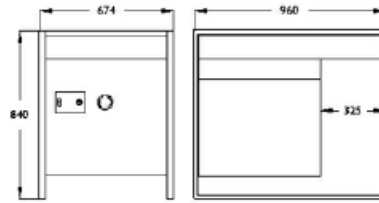
BenchVent, Unit 1 Levens Hall Park, Lund Lane, Killinghall, Harrogate, North Yorkshire. HG3 2BG

Company No: 03217859 Registered office: Widespread Solutions Ltd, Unit 1 Levens Hall Park, Lund Lane, Killinghall, Harrogate, North Yorkshire. HG3 2BG

BenchVent is a trading style of Widespread Solutions Ltd

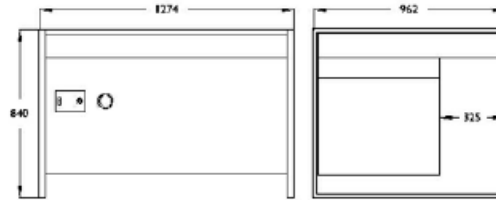
## FPK069084

<b>Fan Type</b>	Forward Curved Centrifugal
<b>Fan Power</b>	170w
<b>Airflow</b>	1000 m <sup>3</sup> /h - 1.5m/s at surface
<b>Dimensions</b>	674 x 960 x 840 mm
<b>Actual Ventilated Area</b>	610 x 650 mm



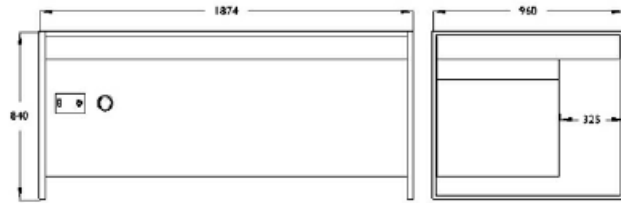
## FPK129084

<b>Fan Type</b>	Forward Curved Centrifugal
<b>Fan Power</b>	550w
<b>Airflow</b>	2000 m <sup>3</sup> /h - 1.5m/s at surface
<b>Dimensions</b>	1274 x 960 x 840 mm
<b>Actual Ventilated Area</b>	1210 x 650 mm



## FPK189084

<b>Fan Type</b>	Forward Curved Centrifugal
<b>Fan Power</b>	570w
<b>Airflow</b>	3000 m <sup>3</sup> /h - 1.5m/s at surface
<b>Dimensions</b>	1874 x 960 x 840 mm
<b>Actual Ventilated Area</b>	1810 x 650 mm



## Available Filter Configurations

- A: Dust
- H: Fine Dust
- B: Very Fine Dust
- L: HEPA Filtered
- E: Fume in Low Volumes
- S: Solder Fume
- C: Dust with some sparks

## General

<b>Power Supply</b>	240v, Single Phase - 110v available
<b>Surface Loading</b>	150kg - Higher loadings on request
<b>Finish</b>	Textured grey powder coat - other finishes on request
<b>Noise Level</b>	63dBa average across range

Specifications vary for some filter configurations - "A" configuration shown.

Dimensions nominal; specifications subject to change.

**T:** 01423 790039

**E:** [enquiries@benchvent.com](mailto:enquiries@benchvent.com)

**W:** [www.benchvent.com](http://www.benchvent.com)

**BenchVent, Unit 1 Levens Hall Park, Lund Lane, Killinghall, Harrogate, North Yorkshire. HG3 2BG**

Company No: 03217859 Registered office: Widespread Solutions Ltd, Unit 1 Levens Hall Park, Lund Lane, Killinghall, Harrogate, North Yorkshire. HG3 2BG

BenchVent is a trading style of Widespread Solutions Ltd

We go to great lengths to ensure accuracy in our literature, however we cannot be held responsible for errors or omissions. Information is given for guidance only and we reserve the right to alter specific